

the gallery

BETWEEN IMAGE AND TEXT EXHIBITION

APRIL 2022 - JUNE 2022

BETWEEN IMAGE AND TEXT

This exhibition considers the interplay of visual images and written text with a selection of works by Boemo Diale, Sam Kentridge, Nano Le Face, Seth Pimentel, Chloe Reid and prints by Artthrob, David Krut Projects and The Artists' Press.

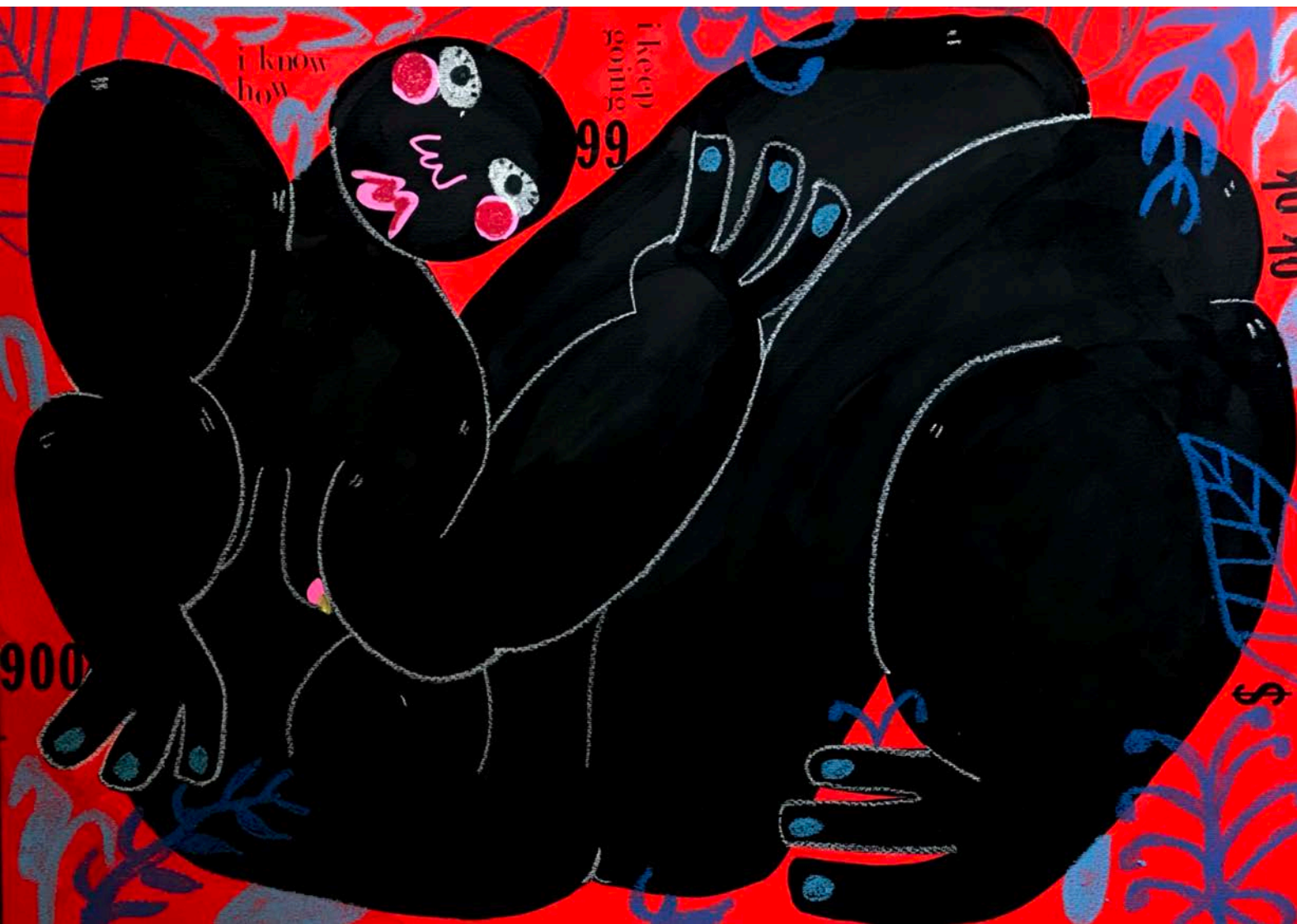
The artists featured in this exhibition use the powerful pairing of image and text to investigate and express the Kaleidoscopic nature of the human experience. Each work presents the viewer with a different facet of identity.

Between Image and Text is an exploration of our relationships with space, time, nature, structure, separation and connection.



BOEMO DIALE
I Think You Should Hurry
mixed media on paper
42 x 59.4 cm

R8 920 framed



BOEMO DIALE
I Know How
mixed media on paper
70 x 50 cm
R9 450 framed

BOEMO DIALE
I Got This Feeling
mixed media on paper
42 x 29 cm

R4 990 framed



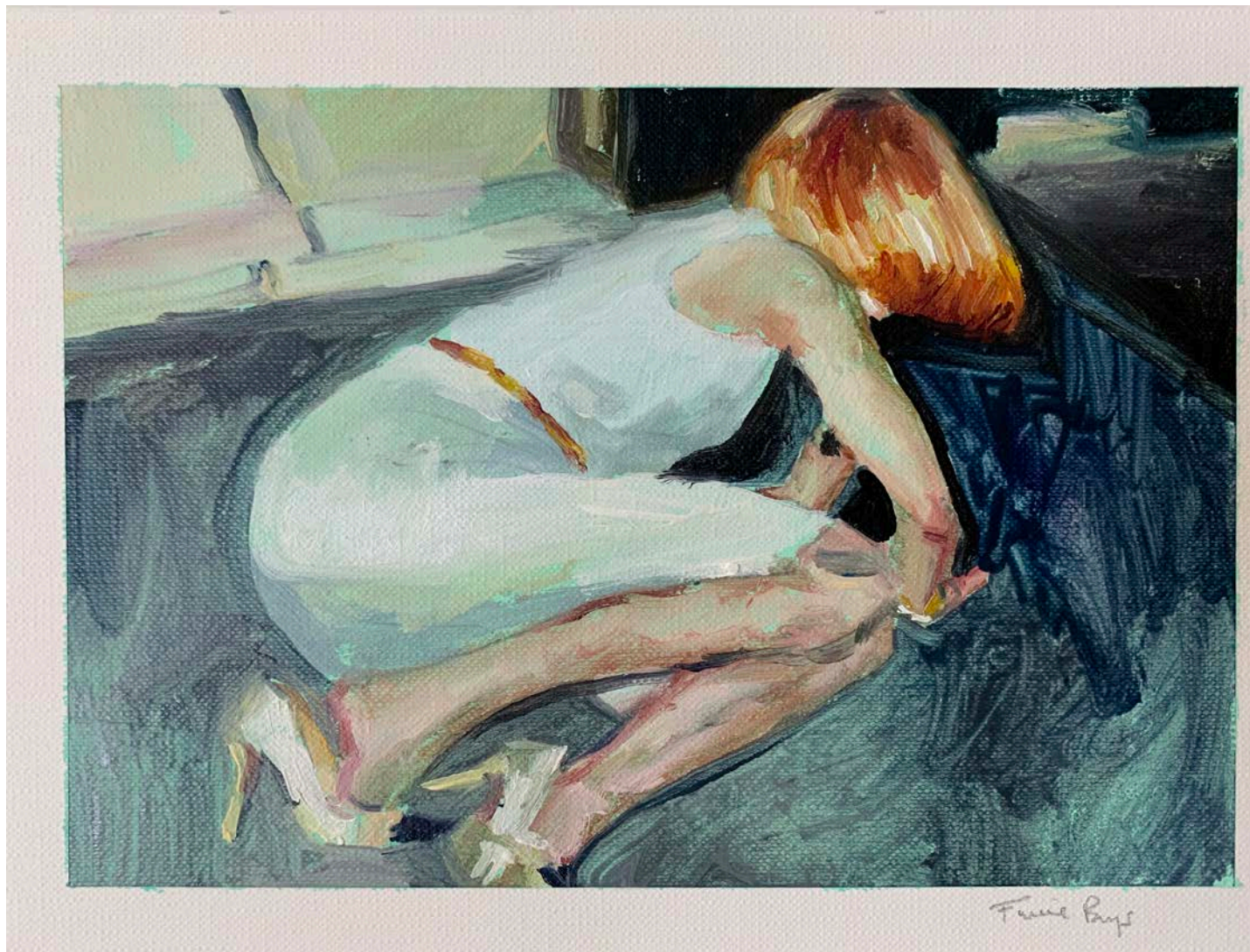


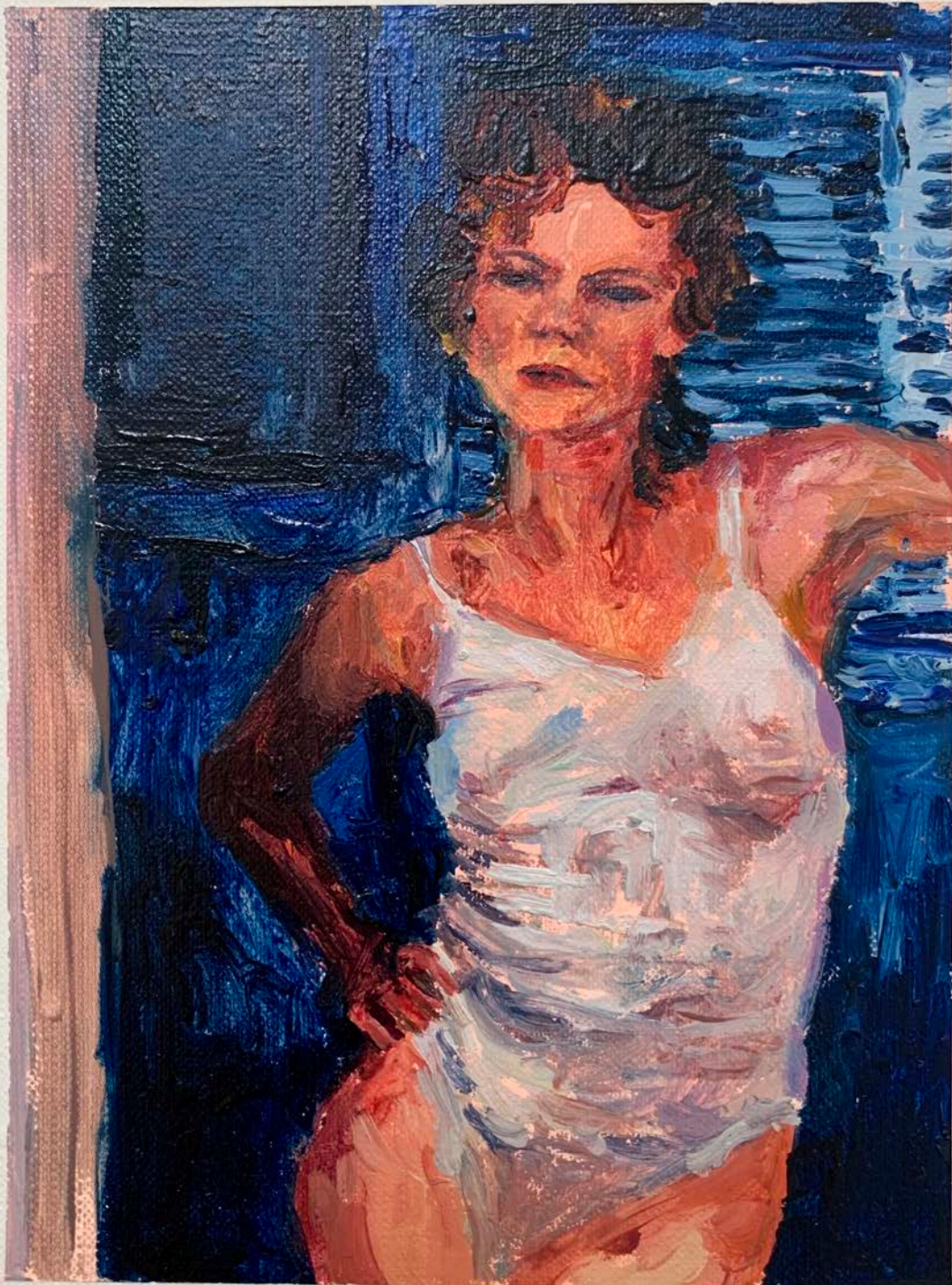
BOEMO DIALE
6 Times Tomorrow
mixed media on paper
42 x 59.4 cm

R6 500 unframed

FANIE BUYS
Recovery Position (Brilliant Painting of Elbow)
oil on fabriano tela
150 x 200 mm

R2 950 framed

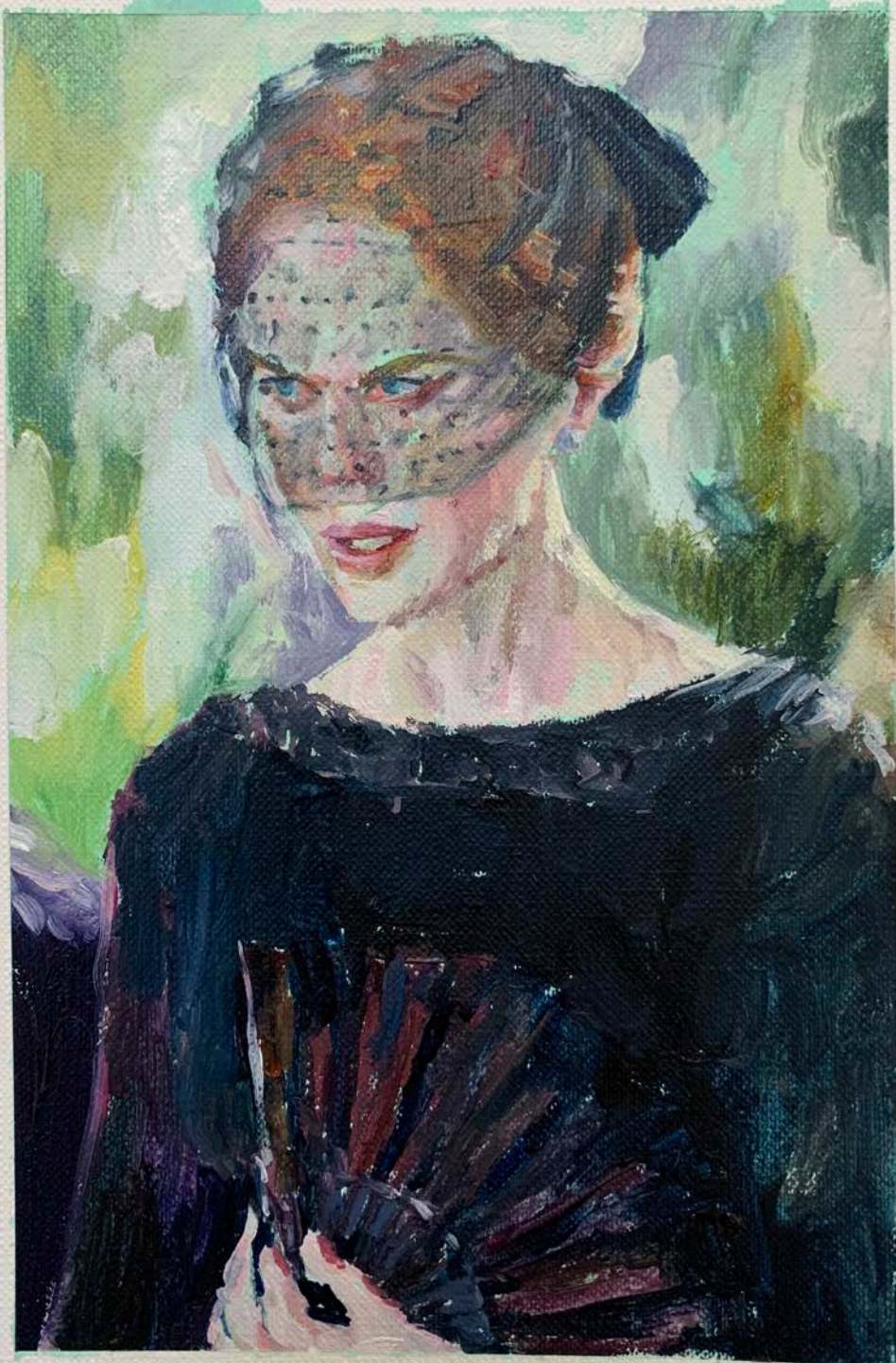




Fanie Buys

FANIE BUYS
Heaven or Brisvegas?
oil on fabriano tela
15 x 20 cm

R2 950 framed

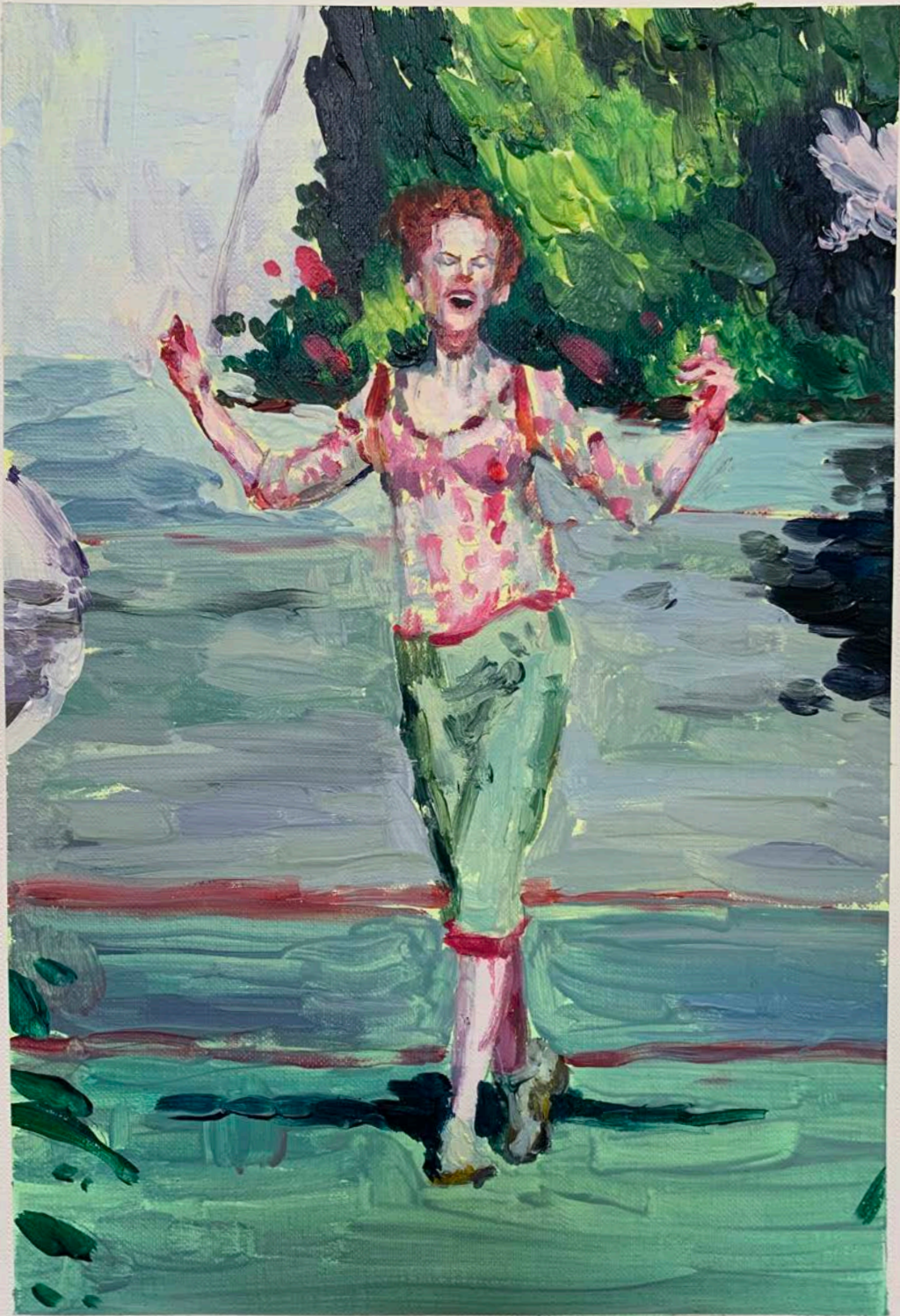


FANIE BUYS

Brittle and Perplexing Notions of Death,
Dying and Outfit Choices in the Afterlife
oil on fabriano tela

20 x 15 cm

R2 950 framed



FANIE BUYS
Gethsemane Vibes
oil on fabriano tela
30 x 20 cm

R3 180 framed



If he doesn't die, he'll need therapy

NANO LE FACE
When a Fire is too Big to Smother
ink on paper
15 x 21 cm
R1 500 framed

NANO LE FACE
With My Most Elusive Thoughts
ink on paper
15 x 21 cm

R1 500 framed

I JUST NEED TO SORT MY LIFE OUT





IS THAT ALL YOU GET FOR YOUR MONEY?

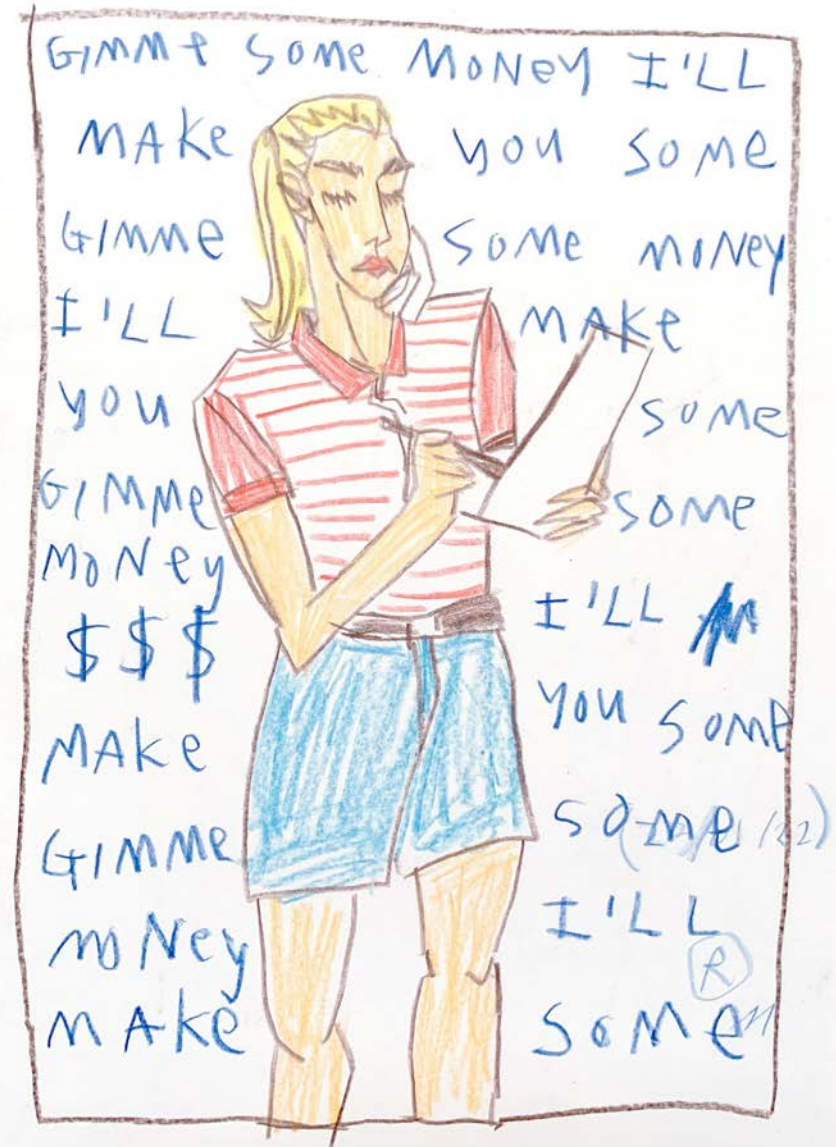
NANO LE FACE
I Dreamt I Was Here Before
ink on paper
15 x 21 cm

R1 500 framed

NANO LE FACE

I'm Not a Prostitute, I'm a Freelancer
colour pencil on paper
15 x 21 cm

R1 400 framed



I JUST WANNA LOOK
you IN The Eye

we CAN TALK About
whatever



NANO LE FACE
At The Cost of Everything Else
colour pencil on paper
15 x 21 cm

R1 400 framed

NANO LE FACE
Either By Love or No Love
colour pencil on paper
15 x 21 cm

R1 500 framed

people ARE NOT Good
to EACH other
people ARE NOT good
to EACH other
people ARE NOT Good
to EACH other





a whisper

young

and lovely

and innocent

and sparkling

and

anything but the truth.

SAM KENTRIDGE

A Whisper

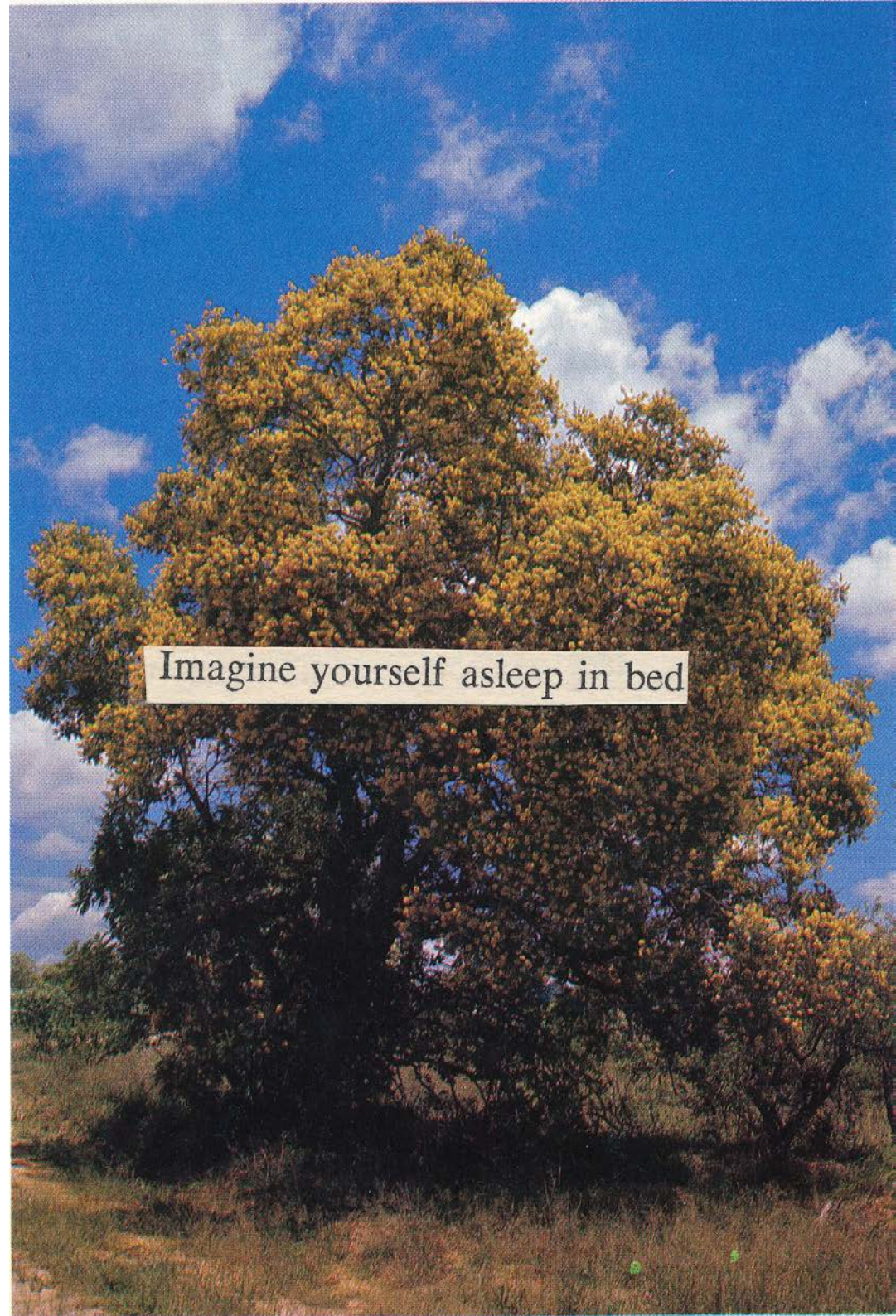
Digital print | edition 1/3

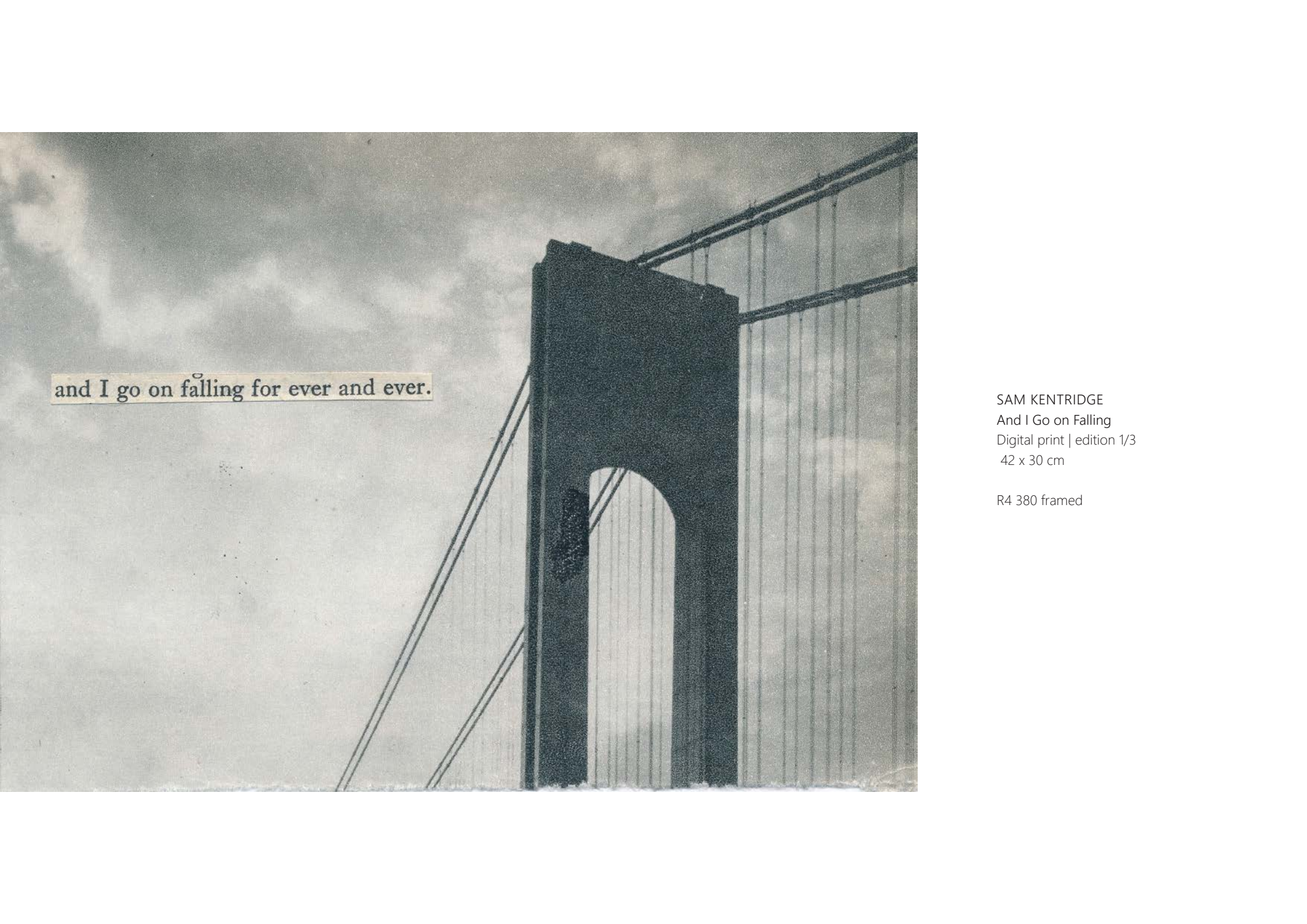
48 x 70 cm

R7 400 framed

SAM KENTRIDGE
Imagine Yourself Asleep in Bed
Digital print | edition 1/3
27 x 40 cm

R3 880 framed





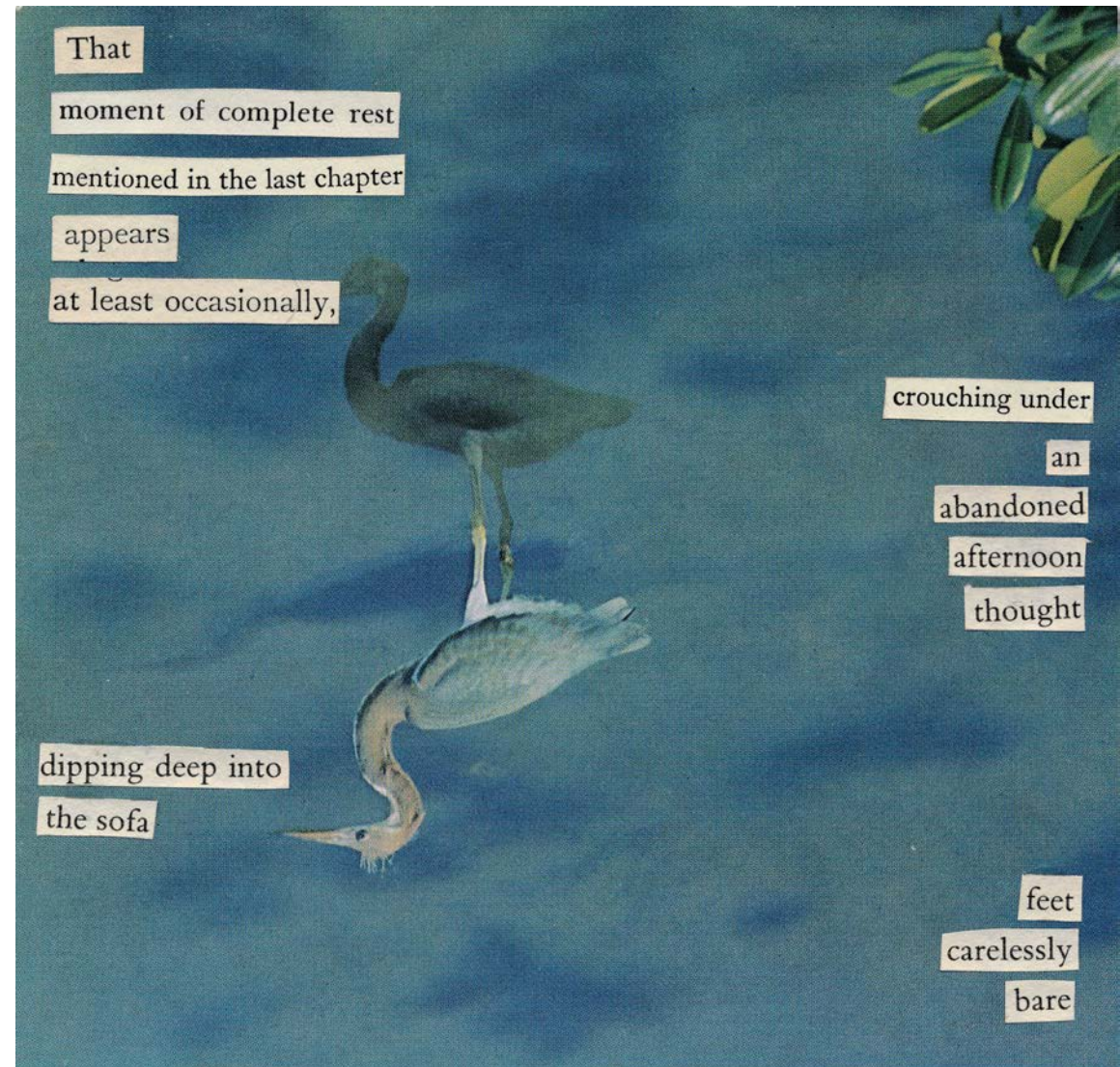
and I go on falling for ever and ever.

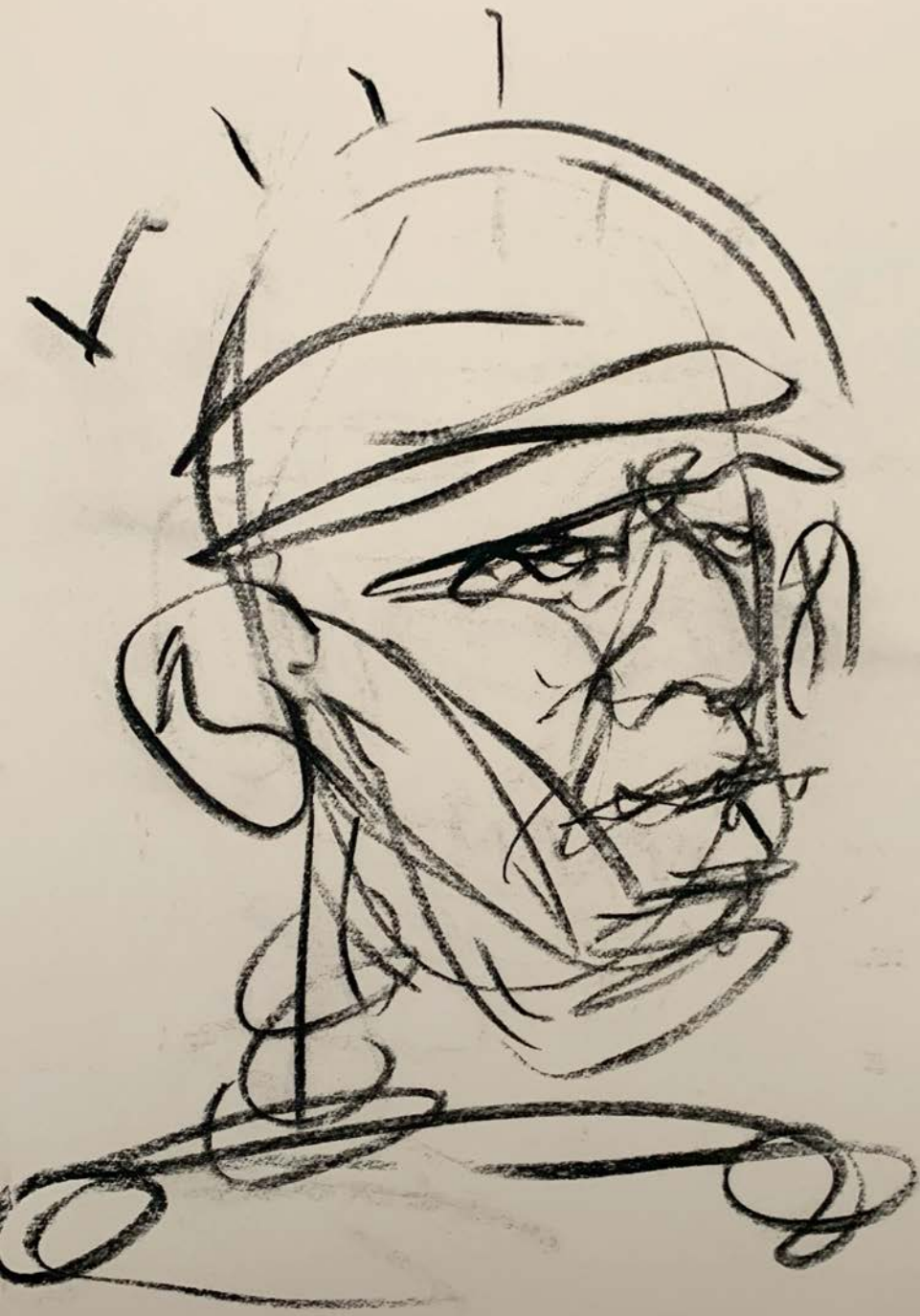
SAM KENTRIDGE
And I Go on Falling
Digital print | edition 1/3
42 x 30 cm

R4 380 framed

SAM KENTRIDGE
That Moment of Complete Rest
Digital print | edition 1/3
25 x 25 cm

R2 730 framed



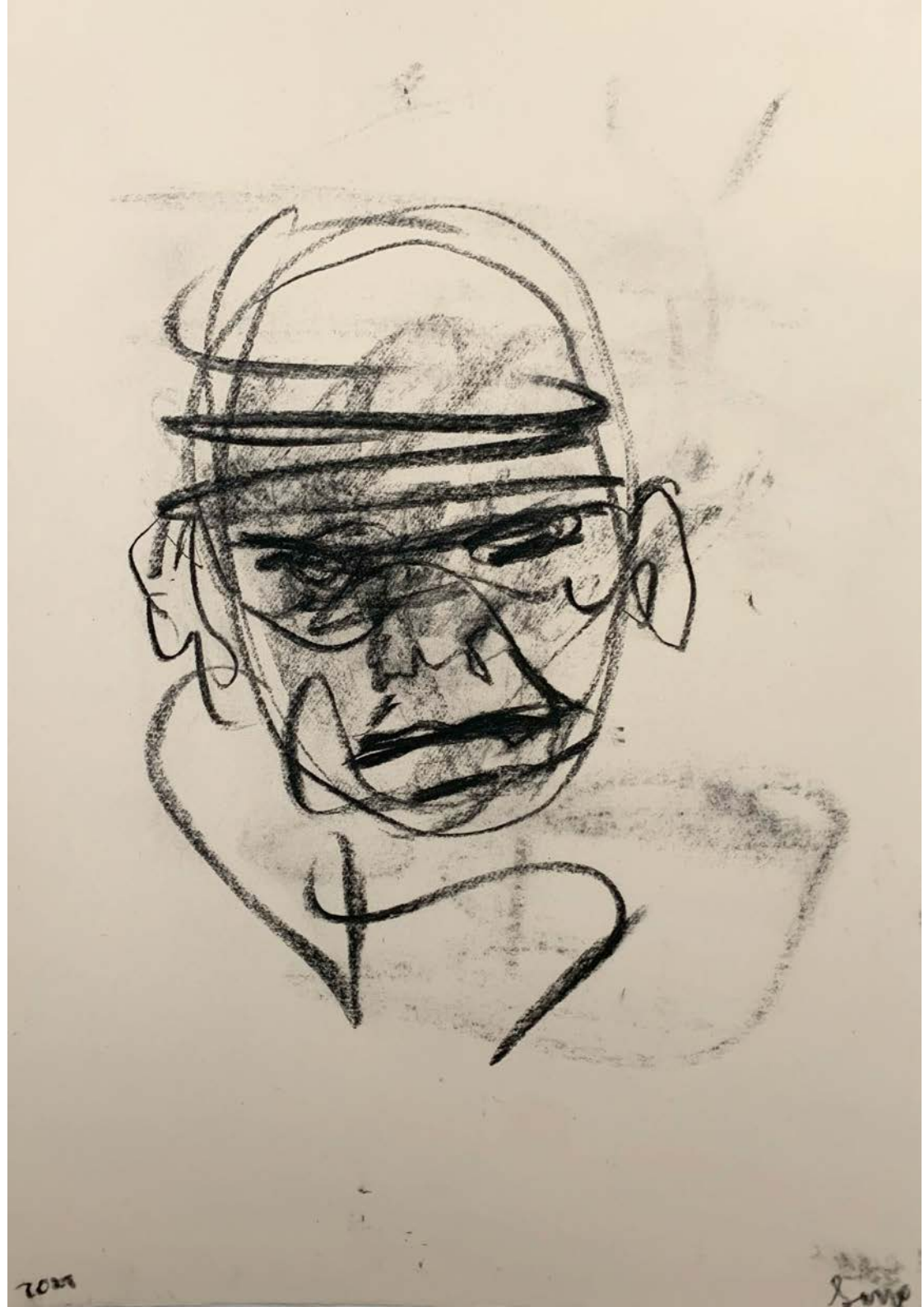


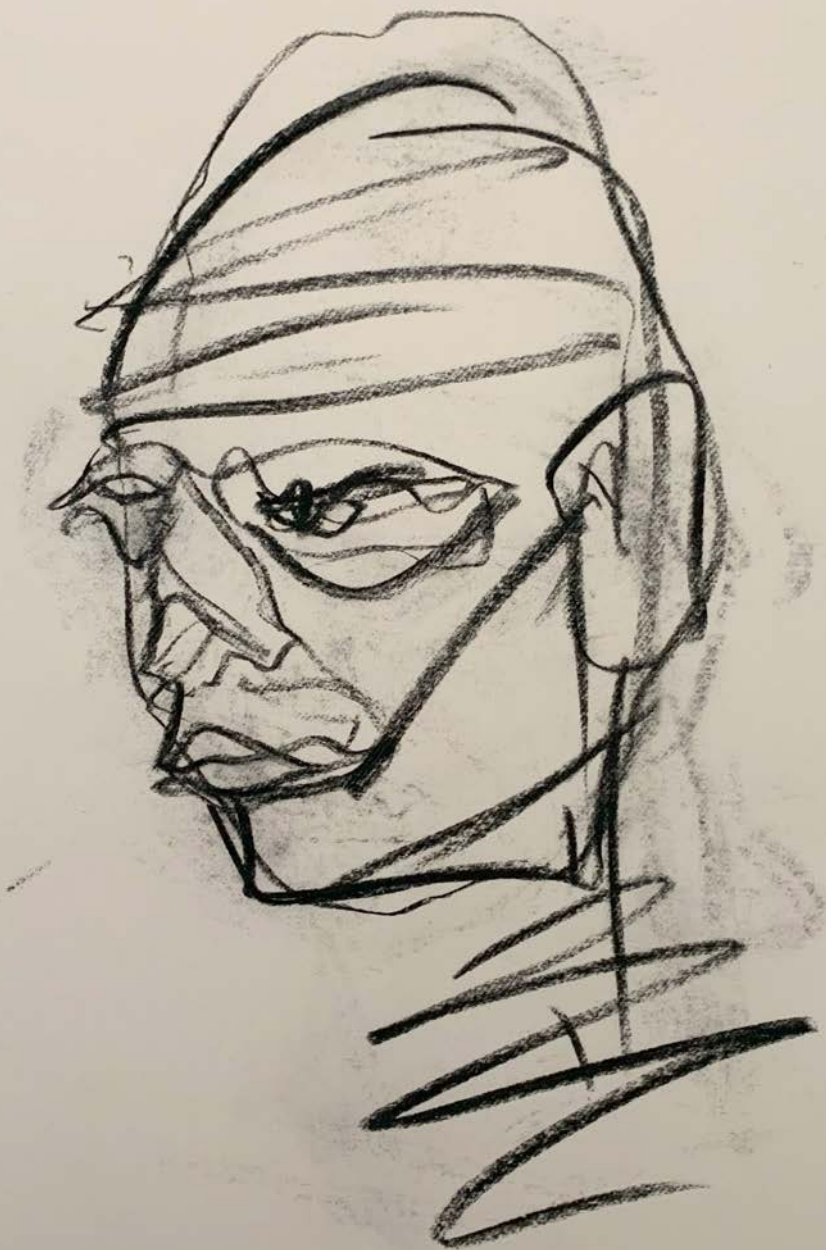
SETH PIMENTEL
Mumbling on Paper Again 1
charcoal on fabriano
25.9 x 35 cm

R4 480 framed

SETH PIMENTEL
Mumbling on Paper Again 2
charcoal on fabriano
25.9 x 35 cm

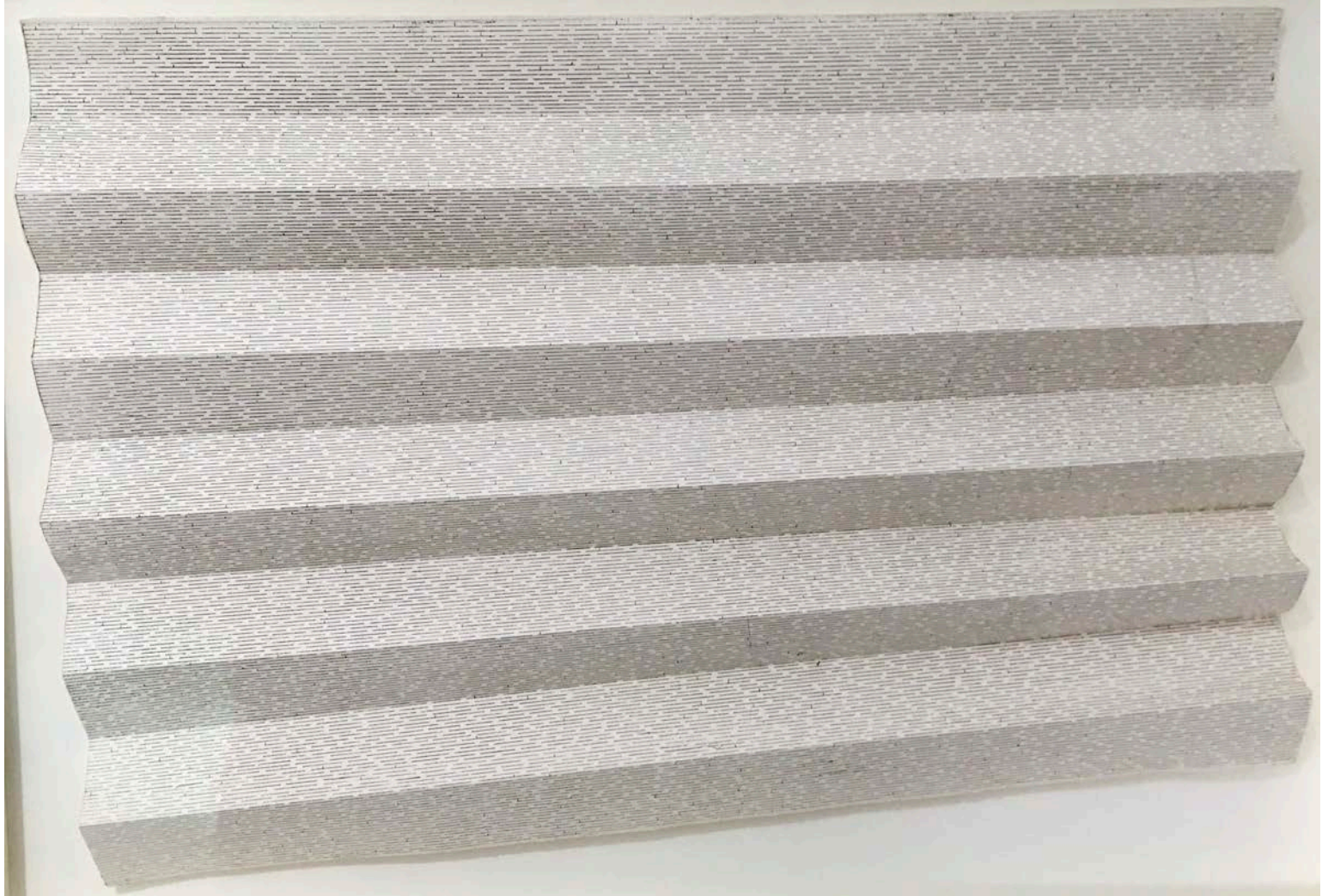
R4 480 framed





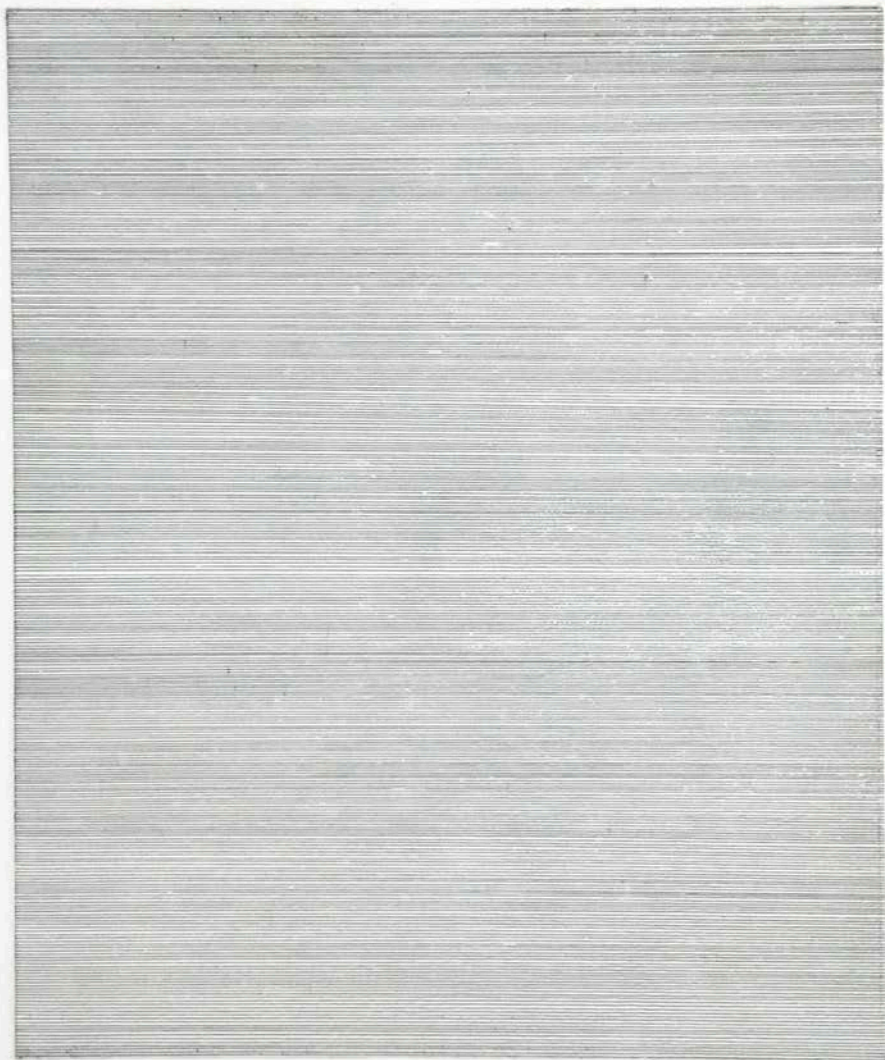
SETH PIMENTEL
Mumbling on Paper Again 3
charcoal on fabriano
25.9 x 35 cm

R4 480 framed



CHLOE REID
Untitled
folded etching
20 x 15 cm

R6 800 framed



CHLOE REID
Untitled (lines)
etching | edition 2/2
24.8 x 33.2 cm

R3 760 framed

CR 1/1

1/1

IN NOWHERE
ABSENT
ENDLESS
DISEMBODIED
FUTURELESS
UNSEEN
NONEXISTENT

WILLEM BOSHOFF

Lost in Dark I

lithograph and relief print | edition 2/25

60 x 75.5 cm

R15 725 framed

printed in collaboration with The Artists' Press

DAN HALTER

On Exactitude in Science

woven archival prints on ivory enigma paper

edition of 60

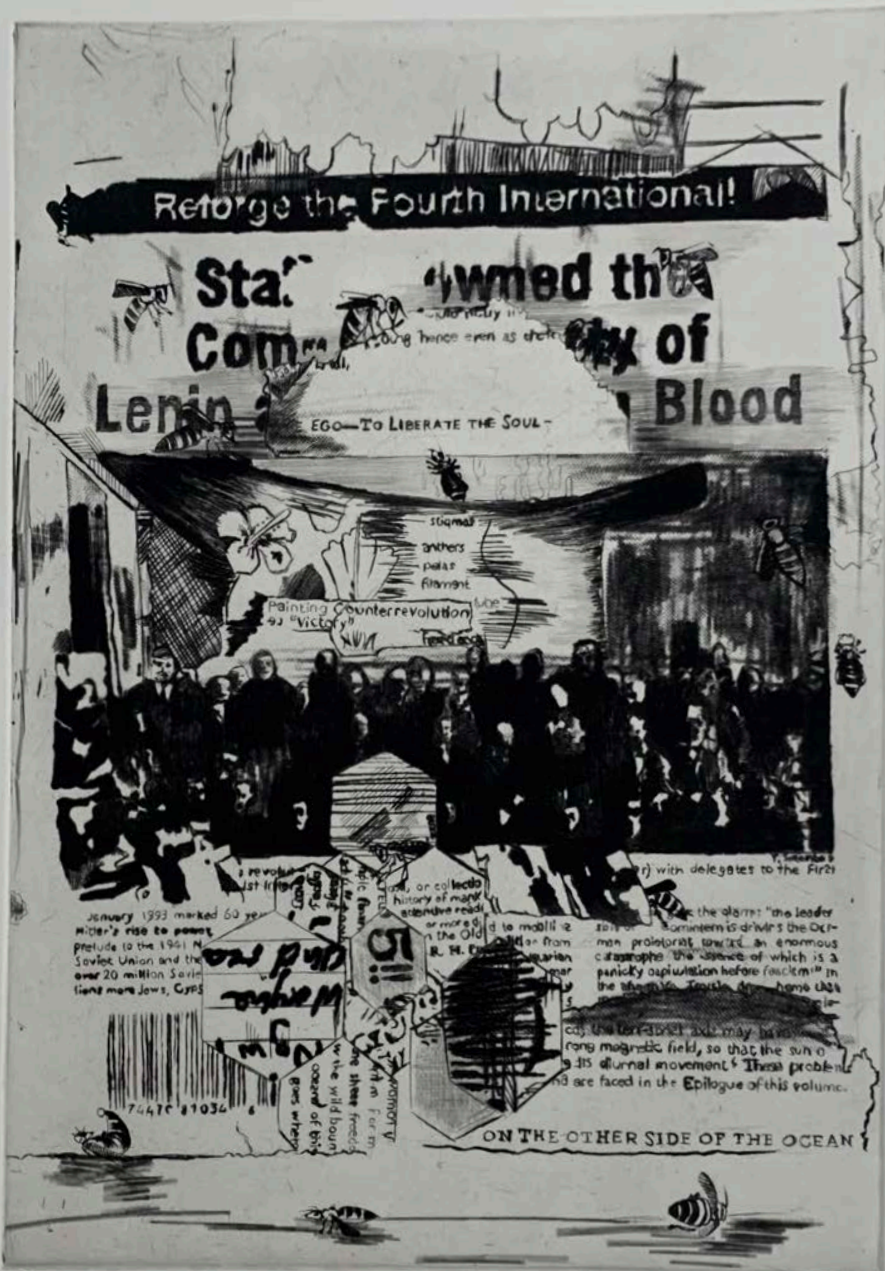
28 x 19 cm

R6 990 framed

printed in collaboration with Artthrob

... In that Empire, the Art of Cartography attained such Perfection that the map of a single Province occupied the entirety of a City, and the map of the Empire, the entirety of a Province. In time, those Unconscionable Maps no longer satisfied, and the Cartographers Guilds struck a Map of the Empire whose size was that of the Empire, and which coincided point for point with it. The following Generations, who were not so fond of the Study of Cartography as their Forebears had been, saw that that vast map was Useless, and not without some Pitilessness was it, that they delivered it up to the Inclemencies of Sun and Winters. In the Deserts of the West, still today, there are Tattered Ruins of that Map, inhabited by Animals and Beggars; in all the Land there is no other Relic of the Disciplines of Geography.

— Suarez Miranda, Viajes de varones prudentes, Libro IV, Cap. XLV, Lerida, 1658



Chad
7/2/16

bread cell

6/10

CHAD CORDEIRO & NATHANIEL SHEPPARD III

The Birds and Bees: Bread Cell

drypoint | edition 6/10

37.9 x 25.5 cm

R3 470 framed

printed in collaboration with David Krut Projects



6/12

a fair amount of tumbling

Heidi Fourie '12

HEIDI FOURIE

A Fair Amount of Tumbling

aquatint, etching and drypoint | edition 6/12

36.4 x 49.5 cm

R6 740 framed

printed in collaboration with David Krut Projects



MAJA MALJEVIC

3X3=9

linocut | edition 9/15

46 x 56 cm

R7 950 framed

printed in collaboration with David Krut Projects

If you have any questions regarding the pieces please contact Fiona or Balekane at:

email: theatelier@webmail.co.za

phone: 011 482 2137

instagram: @thegalleryjhb

 @theatelierjhb