

the gallery

Memory, history, geography
2 September 2023

Participating Artists:

Laurinda Belcher | Nano Le Face | John Phalane
Pule Ratsoma | Renée Rossouw | Anthony Scullion

Memory, history, geography

Memory, history, and geography are interconnected elements that play a pivotal role in shaping our identity. They are intricately woven into the fabric of human civilization, influencing how we evolve, how societies remember their past, and how physical landscapes become repositories of both historical events and shared narratives.

Memory, intertwined with history, is not a static recollection but a dynamic process shaped by cultural, societal, and individual perspectives.

History shapes the consciousness of individuals and societies, influencing how they perceive themselves and their place in the world.

Geography, the study of Earth's landscapes, has its own influence over the course of history and memory. Landscapes provides the backdrop for historical events that will imprint and forge itself into our memory.

"Resonance of Place"

The exploration of memory, history, and geography offers a well of inspiration for artistic expression. We invite visitors to reflect on the interconnectedness of these elements and their role in shaping the human experience. As you navigate the artworks, you will embark on a voyage that transcends time and place, illuminating the delicate threads that bind us to our past, our memories, and the landscapes that hold the echoes of both.

Laurinda Belcher

Laurinda Belcher (b.1987) in Parow, Cape Town is a self-taught abstract painter and holds an Early Childhood Development qualification. She studied Visual Art and Drawing during Highschool at Tygerberg Art Centre in Parow from 2003 - 2005. A painter inspired by the playful nature of her inner child, her imagination is fuelled by memories of shapes and colours from her surroundings - Patterned childhood blankets representing miniature cities, the soothing mint green kitchen table from a great grandmother's house or hieroglyphs an illustrated picture books found in homes, museums and libraries – all containing evidence of magic.



Laurinda Belcher

Afternoon Spells, 2023
Oil on Italian Cotton
49,8 x 59,8 cm

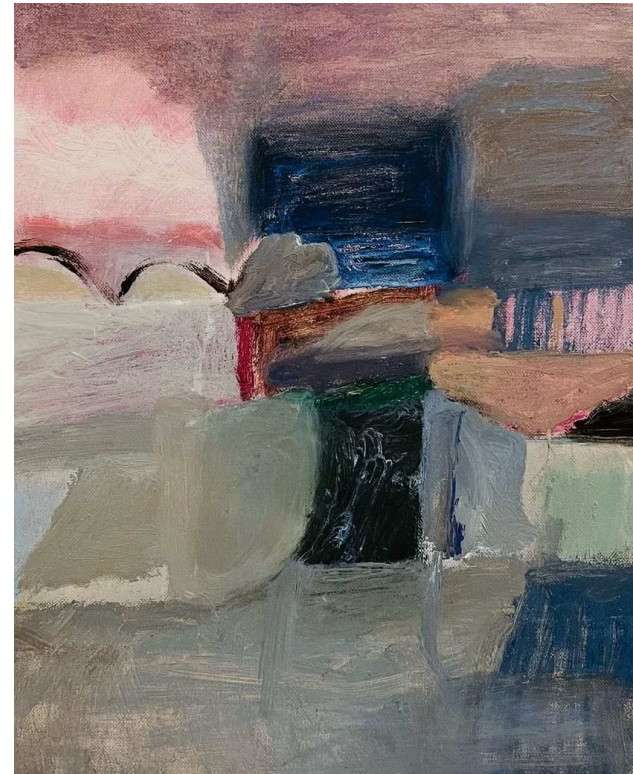
R 13 360 framed



Laurinda Belcher

Safe as Houses
Oil and mixed media on cotton canvas
40,5 x 51 cm

R 9 760 framed



Laurinda Belcher

Night Lights
Oil on Italian Cotton
25 x 30 cm

R 4 140 framed

Nano Le Face

Ntwanano Shilubana (b. 1999) better known as Nano or simply Le Face, is a self-taught visual artist based in Pretoria. Nano studied Film Arts at the Open Window Institute in Pretoria and at AFDA, Johannesburg. Nano describes how he's "been drawing for as long as he can remember." In 2017 he was on a break from studying film and "found all my art supplies from high school. I made a few paintings, and really haven't stopped since."



Nano Le Face

Big Ugly Green Painting
Acrylic on board
120 x 98 cm

R 17 400 unframed

John Phalane

John Phalane uses colour pencils and ballpoint pen to create vivid geographical drawings and architectural impressions that bend conventional perspective. He started making art in 2004, having spent 16 years as a driver for the Inanda Polo Club and several years after that as a taxi driver between Polokwane and Musina. Phalane now lives in Mamabolo, Limpopo.



John Phalane

France, Paris (Louvre)
Colour pencil on paper
99,5 x 67,5 cm

R 23 520 framed



John Phalane

Johannesburg, Contemporary Art Foundation
Colour pencil on paper
99,5 x 67,5 cm

R 23 520 framed

Pule Ratsoma

Pule Ratsoma (b.1990) is a printmaker and artist who was born in Tembisa, Gauteng. Ratsoma splits his time between Johannesburg, where he trained and worked as a printmaker at Artist Proof Studio, and Limpopo. Ratsoma's paintings and drawings are defined by gestural and expressive marks that read as code or entangled language. He has exhibited widely in South Africa and is committed to transferring art skills to younger artists in rural areas, townships and communities.



Pule Ratsoma

The lasting effect of a single word

Silkscreen

Edition 4/4

68,8 x 94,7 cm

R 9 400 framed

Renée Rossouw

Renée Rossouw (b. 1985, Cape Town) is an award-winning artist, and architect from Cape Town, South Africa. She explores a variety of different projects, from patterns and products, to murals, renovations and art. She has exhibited internationally at the Venice Biennale, Moscow Design Week, Madrid Design net and had numerous solo art exhibitions locally. She often collaborates with product houses, including the first African collection for IKEA in 2019. She is committed to the South African creative landscape and future.



Renée Rossouw

The Congo River Basin
(The Elephant Faces II)
Incised plywood and paint
50 x 65,1 cm

R 23 450 framed



Renée Rossouw

Transboundary Aquifers
Incised plywood, graphite and paint
50 x 65,1 cm

R 20 450 framed



Renée Rossouw

The Nile Flooding
Incised plywood and paint
49,9 x 69,9 cm

R 26 570 framed



Renée Rossouw

North Nubian Magic
Incised plywood, pastel and paint
49,9 x 69,9 cm

R 20 570 framed

Anthony Scullion

Anthony Scullion was born in 1967 in East Kilbride in Scotland. He studied at the Glasgow School of Art, graduating in 1992. His art concentrates on the face and figure, combining the traditional with the contemporary in an individual and powerful way. It has been written of him; 'without plagiarism, Scullion resonates at once the chiaroscuro of Rembrandt, the spirituality of Giacometti, and the distortion of Bacon' and that 'he invests these bodies with forms and colours that further the tradition of the masters in art'. *'There tends to be a sadness and vulnerability to the work I do, but hopefully there is also a sense of compassion, hope and humanity.'*



Anthony Scullion

Untitled, "Pink portrait"
Oil on canvas
25,1 x 30 cm

R 28 020 framed



Anthony Scullion

Untitled, "Green portrait"
Oil on canvas
35 x 27,8 cm

R 31 150 framed



Anthony Scullion

Lost Cause I
Oil on board
42,9 x 34,1 cm

R 39 200 framed



Anthony Scullion

Lost Cause II
Acrylic and charcoal on paper
57,8 x 41,9 cm

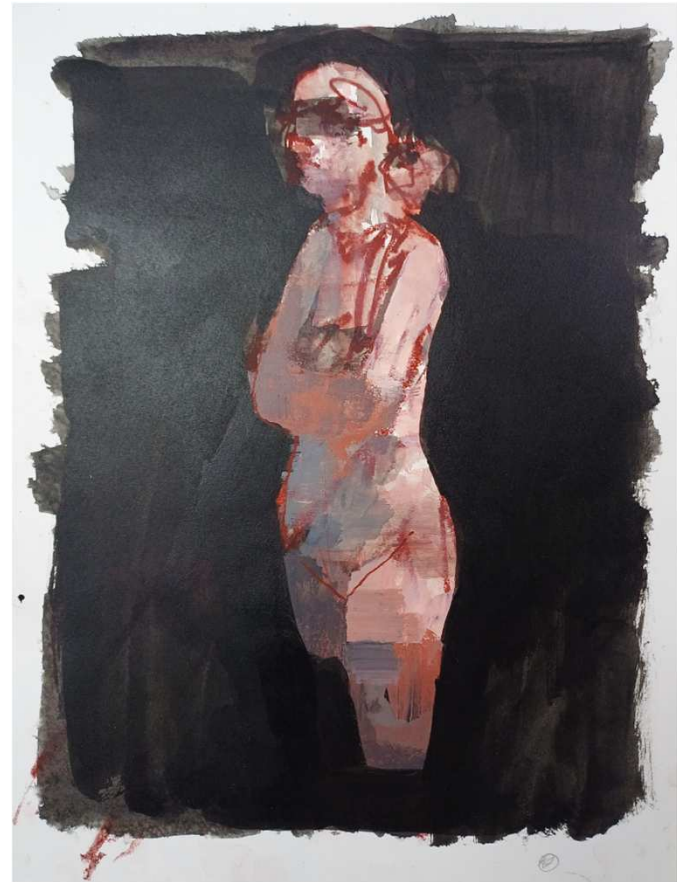
R 39 720 framed



Anthony Scullion

Untitled, "Figure on grey"
Mixed media on paper
30,2 x 40,3 cm

R 15 460 framed



Anthony Scullion

Untitled, "Black & Pink"
Mixed media on paper
30,3 x 40,5 cm

R 26 110 framed



Anthony Scullion

Untitled, "Pink & Red"
Mixed media on paper
30,2 x 40,4 cm

R 26 020 framed



Anthony Scullion

Girl I
Ink on paper
42 x 59,4 cm

R 12 040 framed



Anthony Scullion

Untitled, "Woman and child"
Ink on paper
42 x 59,4 cm

R 12 040 framed



Anthony Scullion

Figure Study
Mixed media on paper
42 x 59,4 cm

R 12 040 framed

the gallery is a platform for contemporary art.

Its programme includes exhibitions, exchanges, workshops and residencies.

Address: 44 Stanley Avenue, Braamfontein Werf, Milpark, 2092

Email: info@thegalleryjhb.co.za

Instagram: [@thegalleryjhb](https://www.instagram.com/thegalleryjhb)

Phone: 011 482 2137